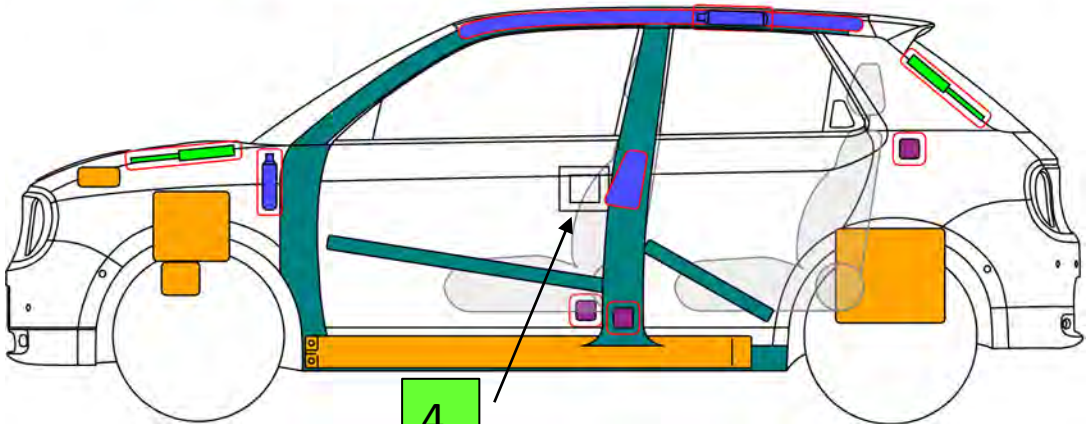
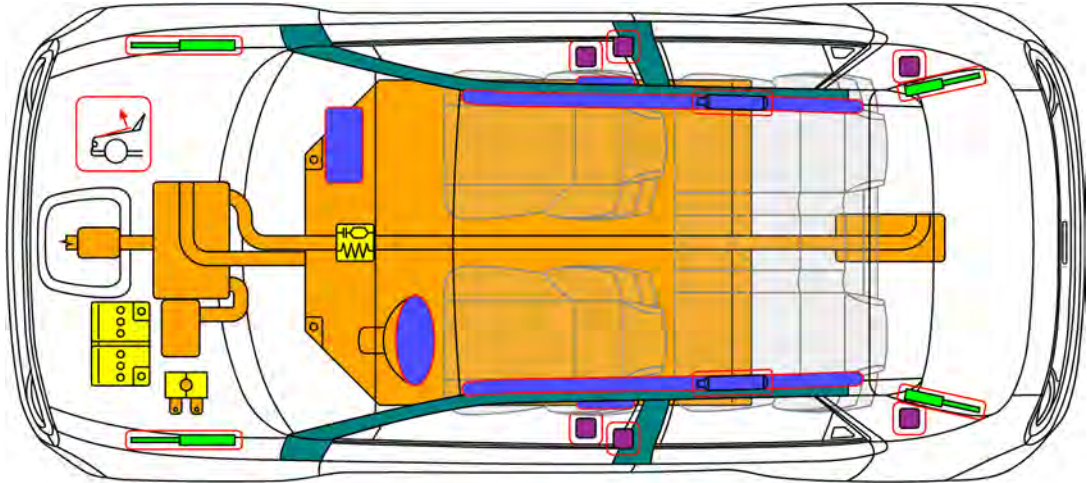




HONDA

Honda e
Type: 5dr Hatchback
(2020 -)



4.

	Airbag		Stored gas inflator		Seatbelt pretensioner		SRS control unit		Pedestrian protection active system
	Automatic rollover protection system		Gas strut/Preloaded spring		High strength zone		Zone requiring special attention		
	Battery low voltage		Ultra capacitor low voltage		Fuel tank		Gas tank		Safety valve
	High voltage battery pack		High voltage power cable/component		High voltage disconnect		Fuse box disabling high voltage system		Ultra capacitor high voltage

Honda e Type: 5dr Hatchback (2020 -) – Additional Pages

1. Identification / Recognition

! LACK OF ENGINE NOISE DOES NOT MEAN VEHICLE IS OFF. SILENT MOVEMENT OR INSTANT RESTART CAPABILITY EXISTS UNTIL VEHICLE IS FULLY SHUT DOWN. WEAR APPROPRIATE PPE.

Brand and model name



Side camera mirror system



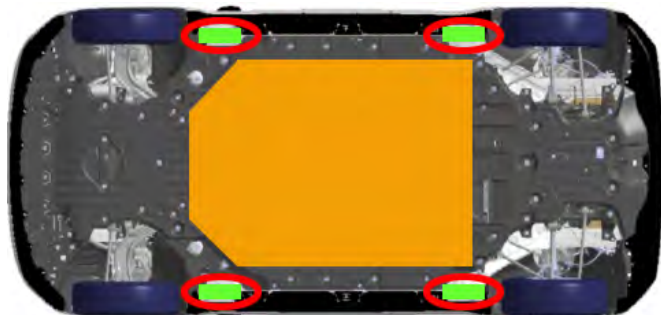
Charge port in the hood



2. Immobilization / Stabilization / Lifting

Immobilize vehicle:

1. Block wheels and set parking brake;
2. Push the P (park) button to select the P (park) position.



Lifting points:

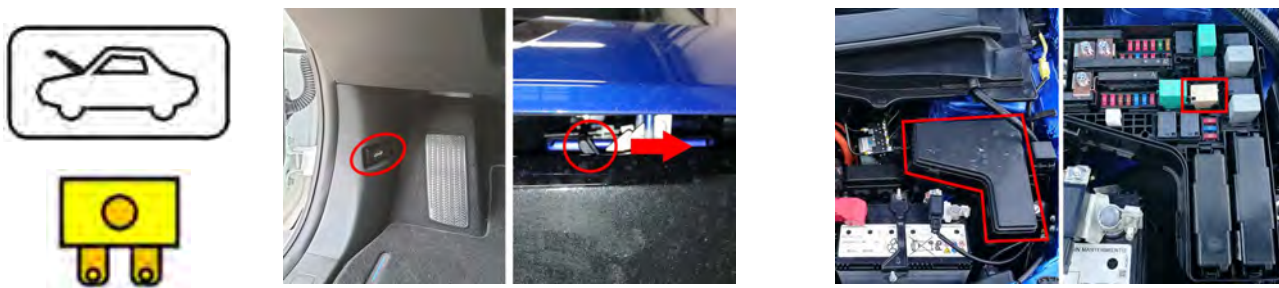
- Appropriate lifting points;
- High voltage battery;

3. Disable direct hazards / Safety regulations

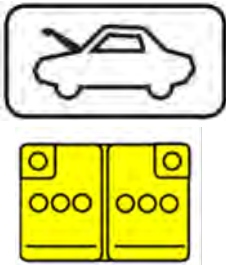
Deactivation of high voltage system, when the vehicle is ON



Deactivation of high voltage system, when the vehicle is OFF or UNKNOWN



Disconnect 12 Volt battery



Safety regulations:



Always assume the vehicle is powered, even if it is silent!
 Make sure that the vehicle is immobilized and the propulsion system is deactivated;
 Never touch, cut, or open any orange high voltage power cable or high voltage component;
 In case of a collision with airbag deployment and/or seat belt pretensioner activation, the propulsion system will be disabled. The restraint systems are still active.

4. Access to the occupants

Seat adjustment



Steering column adjustment



Pop-up handle



Glass types:

- A. Laminated glass.
- B. Tempered glass.

When the front door outer handle doesn't pop-out automatically, push the front side inwards.



5. Stored energy / Liquids / Gases / Solids



When conventional antifreeze/coolant leaks from the battery pack, it can become unstable with risk of thermal runaway. Rising battery pack temperature might be an indicator of thermal runaway.



6. In case of fire



USE LARGE AMOUNTS OF PURE WATER



POTENTIAL RISK OF BATTERY RE-IGNITION / DELAYED IGNITION!

7. In case of submersion

- It is safe to enter the water as the vehicle and water have the same electrical potential;
- If possible, remove the vehicle from the water and continue with the deactivation procedure for this vehicle (see chapter 3).

8. Towing / transportation / storage

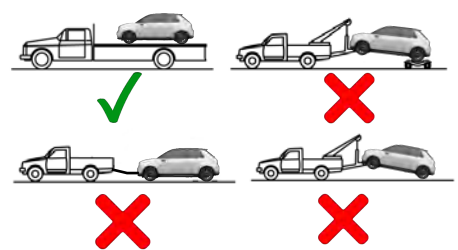
Location front hook



Location rear hook



Towing



STORE VEHICLE IN AN OPEN-AIR PARKING AT SAFE DISTANCE 5M FROM OTHER OBJECTS OR VEHICLES!



POTENTIAL RISK OF BATTERY RE-IGNITION / DELAYED IGNITION!

10. Explanation of pictograms used

	Smart key distance		Electric vehicle
	Warning high voltage		Risk of flammability
	Caution		Risk of damaging human health
	Warning low temperature		Risk of acute toxicity
	Air-conditioning component		Risk of an explosion
	Use water to extinguish the fire		Risk of corrosive material / substances
	Use IR Camera (thermal imaging)		Bonnet